

# Environmental policies in Romania – how to tackle the permitting procedures

## F&R Worldwide

26.12.2020, Waste2Gas 2nd Know-How Event

# Permit categories & main requirements

- Construction permit
  - Technical project
  - Land use agreements
  - Urban planning (PUZ – Plan Urban Zonal)
  - Environment (EIA – Environmental Impact Assessment)
  - Water (depending on location)
  - Emergency response (ISU – Inspectoratul pentru Situatii de Urgenta)
- Operational permit
  - Technical project
  - Environment (EIA – Environmental Impact Assessment)
  - Water (depending on location)
  - Emergency response (ISU – Inspectoratul pentru Situatii de Urgenta)

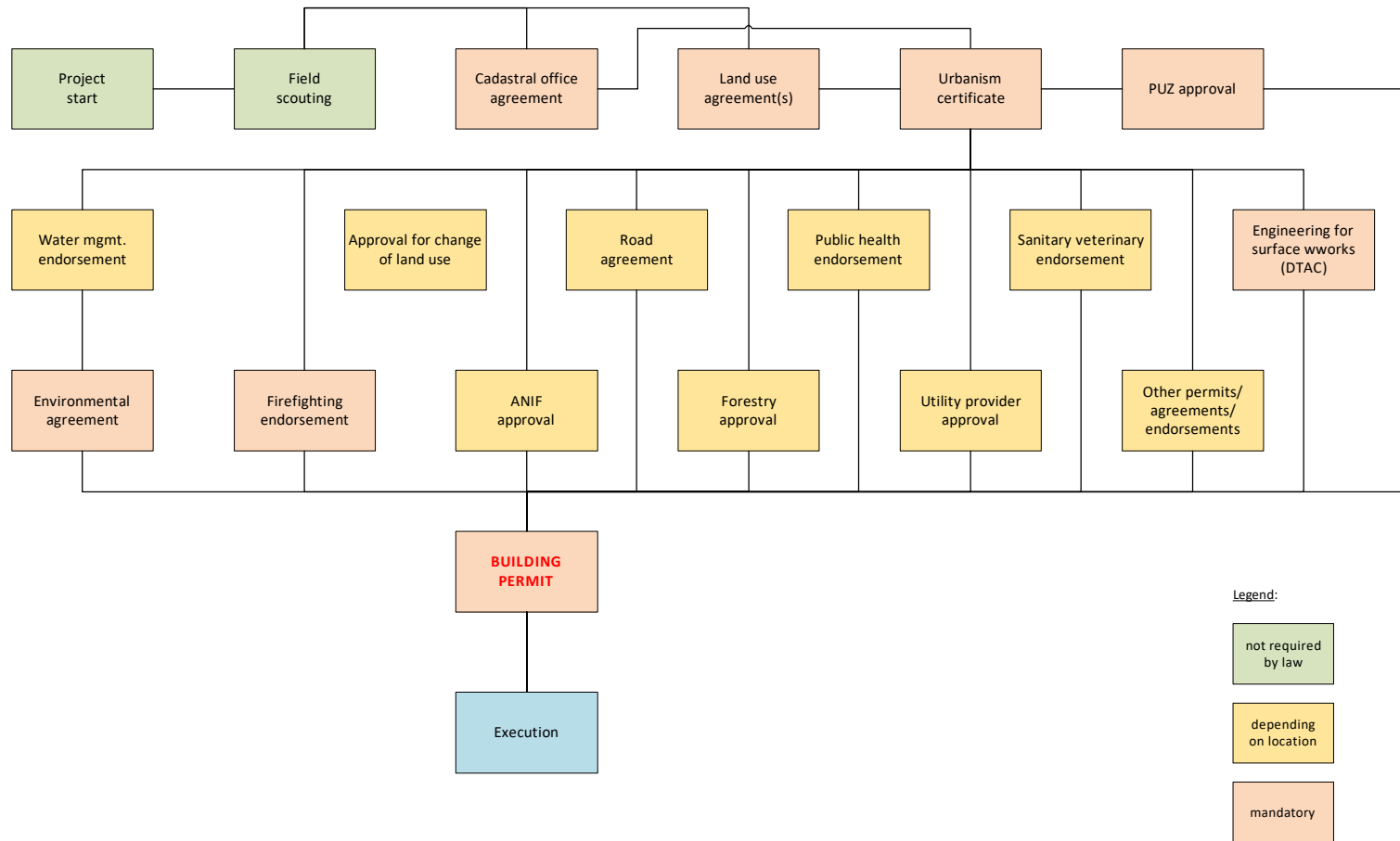
## Special legal frameworks of interest I

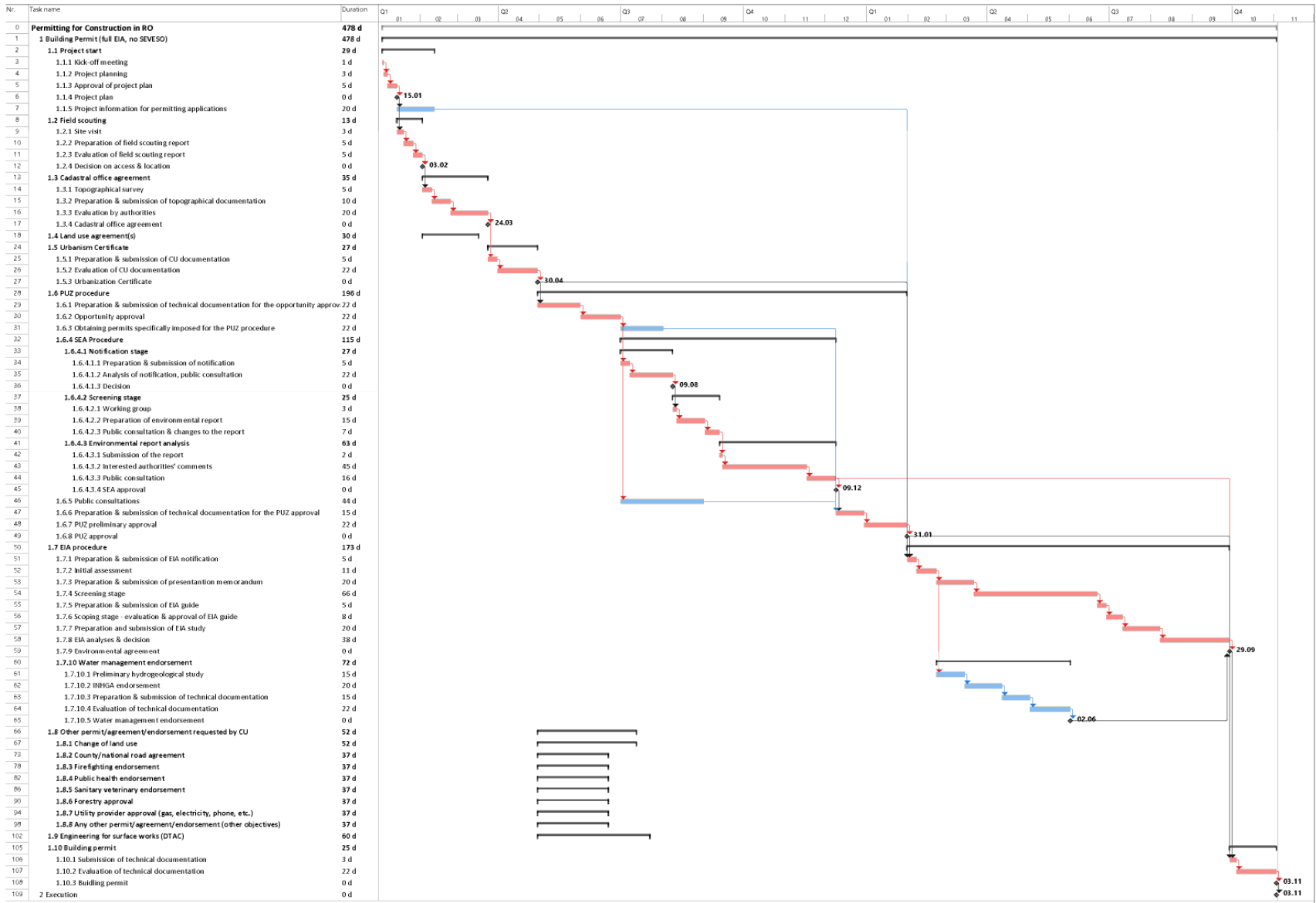
- The **Industrial Emissions Directive** (formerly IPPC Directive) aims to achieve a high level of protection of human health and the environment taken as a whole by reducing harmful industrial emissions across the EU, in particular through better application of Best Available Techniques (BAT)
- 5 pillars:
  - Integrated approach - permits must cover e.g. emissions to air, water and land, generation of waste, use of raw materials, energy efficiency, noise, prevention of accidents, and restoration of the site upon closure
  - Use of best available techniques
  - Flexibility for the competent authorities
  - Inspections
  - Public participation

## Special legal frameworks of interest II

- The **SEVESO Directive** aims at the prevention of major accidents involving dangerous substances. However, as accidents may nevertheless occur, it also aims at limiting the consequences of such accidents not only for human health but also for the environment.
- Main obligations for operators
  - Notification of all concerned establishments
  - Deploying a major accident prevention policy
  - Producing a safety report for upper-tier establishments
  - Producing internal emergency plans for upper tier establishments
  - Providing information in case of accidents

# Construction permit – 1 year 10 months

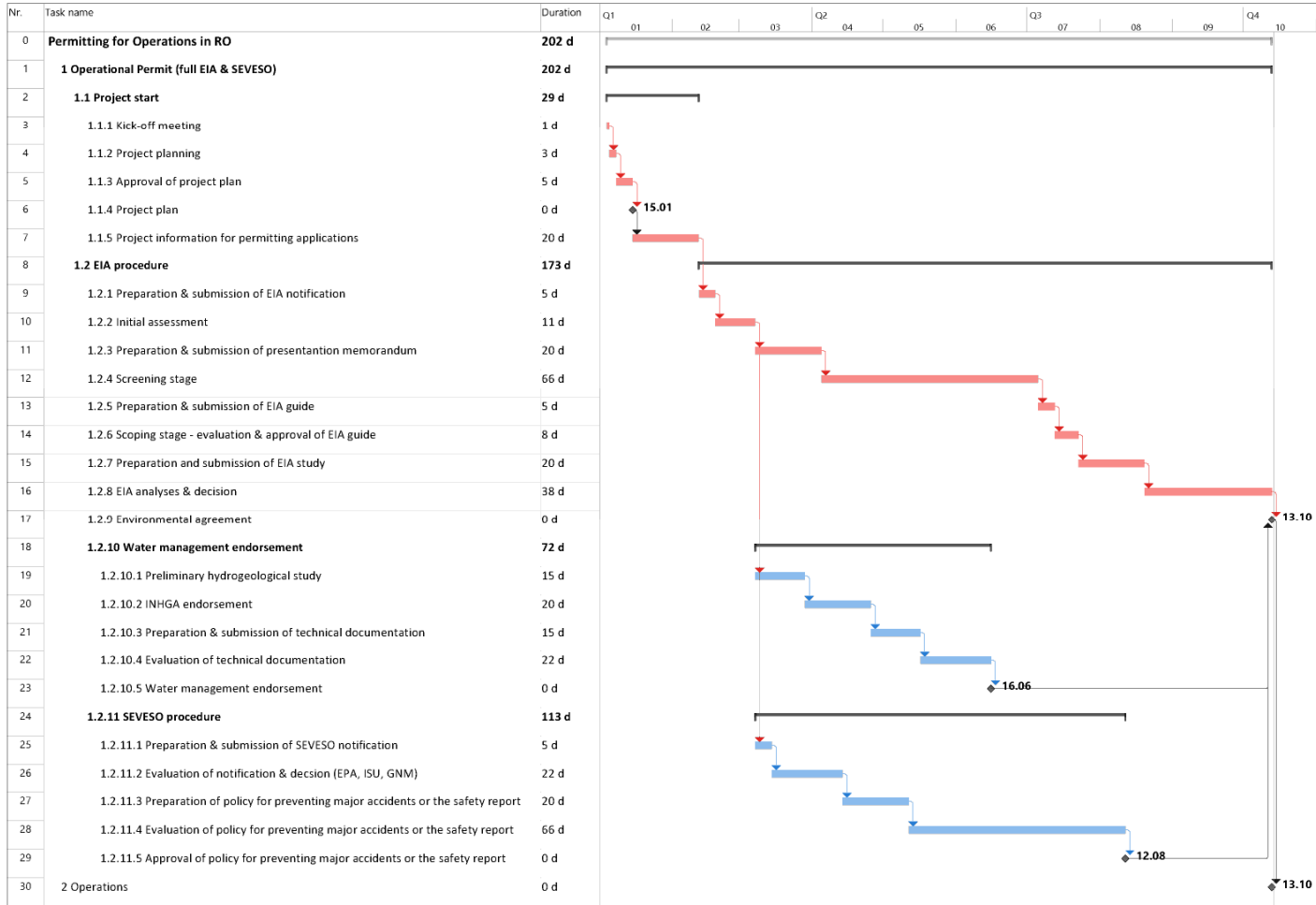




# Construction permit – process details

Project phase	Duration <sup>1)</sup> (wd)	Application document (process input)	Data for application document	Resulting document (process output)	Relevant authority
Project start	29	n/a	Project information for consultant(s)	Project plan	n/a
Field scouting	13	Field scouting report	Site visit	Access & location	Project Owner
Cadastral office agreement	35	Topographical documentation	Topographical survey	OCPI agreement	OCPI
Ownership agreement(s)	30	Cadastral documentation	Agreements with landowners	Landbook extract	OCPI
Urbanization certificate (CU)	27	CU documentation	Layout of the project in Stereo 70	CU	City Hall/County Council
Change of land use	52	Technical documentation	OSPA study Technical approval ANIF	Approval for change of land use	County Agricultural Department
County/national road agreement	37	Technical documentation	Road police endorsement Layout of the project in Stereo 70	County/national road agreement	County Council/CNADNR
PUZ procedure <sup>2)</sup>	196	Technical documentation	PUZ project	PUZ approval	City Hall/County Council
SEA Procedure <sup>2)</sup> (part of PUZ procedure)	115	Notification Environmental report	PUZ technical documentation	EPA approval	EPA
EIA procedure <sup>3)</sup>	173	Notification Presentation memorandum EIA guide EIA study	Layout of the project in Stereo 70	Environmental agreement	EPA
Water management endorsement <sup>4)</sup> (part of EIA procedure)	157	Technical documentation	Preliminary hydrogeological study INHGA endorsement	Water management endorsement	Apele Romane
SEVESO procedure <sup>5)</sup> (part of EIA procedure)	113	Notification Policy for preventing major accidents or safety report	Data concerning the hazardous substances Layout of the project in Stereo 70	Approval of policy for preventing major accidents or safety report	EPA, ISU, GNM
Firefighting endorsement	37	Technical documentation	Fire safety scenario Layout of the project in Stereo 70	Firefighting endorsement	ISU
Public health endorsement	37	Technical documentation	Layout of the project in Stereo 70	Public health endorsement	DSP
Sanitary veterinary endorsement	37	Technical documentation		Sanitary veterinary endorsement	ANSVSA
Any other permit/agreement/ endorsement requested by the CU	37	Technical documentation			
Engineering for surface works	60	Geotechnical study		Engineering project (PT/CS/DE)	Verifier
Building permit	25	Technical documentation	PUZ Engineering project Environmental agreement (EIA) Approvals imposed under CU	Building permit	City Hall/County Council

# Operational permit – 9 ½ months



## Recommendations for time & cost-efficient projects

- Use realistic permitting schedule in project planning
- Collaborate with experienced permitting specialist with good reputation at authority level
- Prepare comprehensive application documentation to avoid requests for completion
- Apply integrated investigation & permitting approach (one-stop-shop)
  - Environmental site investigation
  - Geotechnical site investigation
  - Permitting for construction
  - Permitting for operations



**F&R Worldwide S.R.L.**  
6 Biserica Floreasca Str.  
020322 Bucharest  
Romania

**Martin Dreiseitel**  
Managing Director

M +40 731 980929  
mdreiseitel@fandr.ro