

PORT OF CONSTANȚA

Developments in the field of LNG infrastructure
initiatives in the Port of Constanta

Linking **WORLDS** !

www.portofconstantza.com



Port of Constanța – Eastern Europe Gateway

- ***Located at the crossroads of Central and Eastern Europe markets with the Caspian region, Central Asia and the Far East.***
- ***Transit node for the landlocked countries in the Central and South-East Europe.***
- ***Agri-bulk hub for Central and Eastern Europe.***
- ***Deepest port in the Black Sea – up to 18.5 m operational depth.***

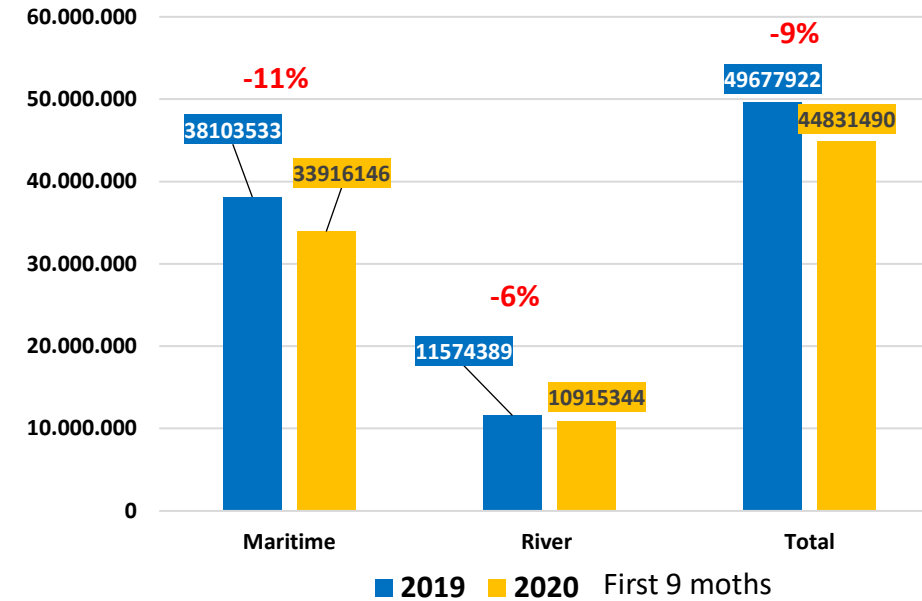
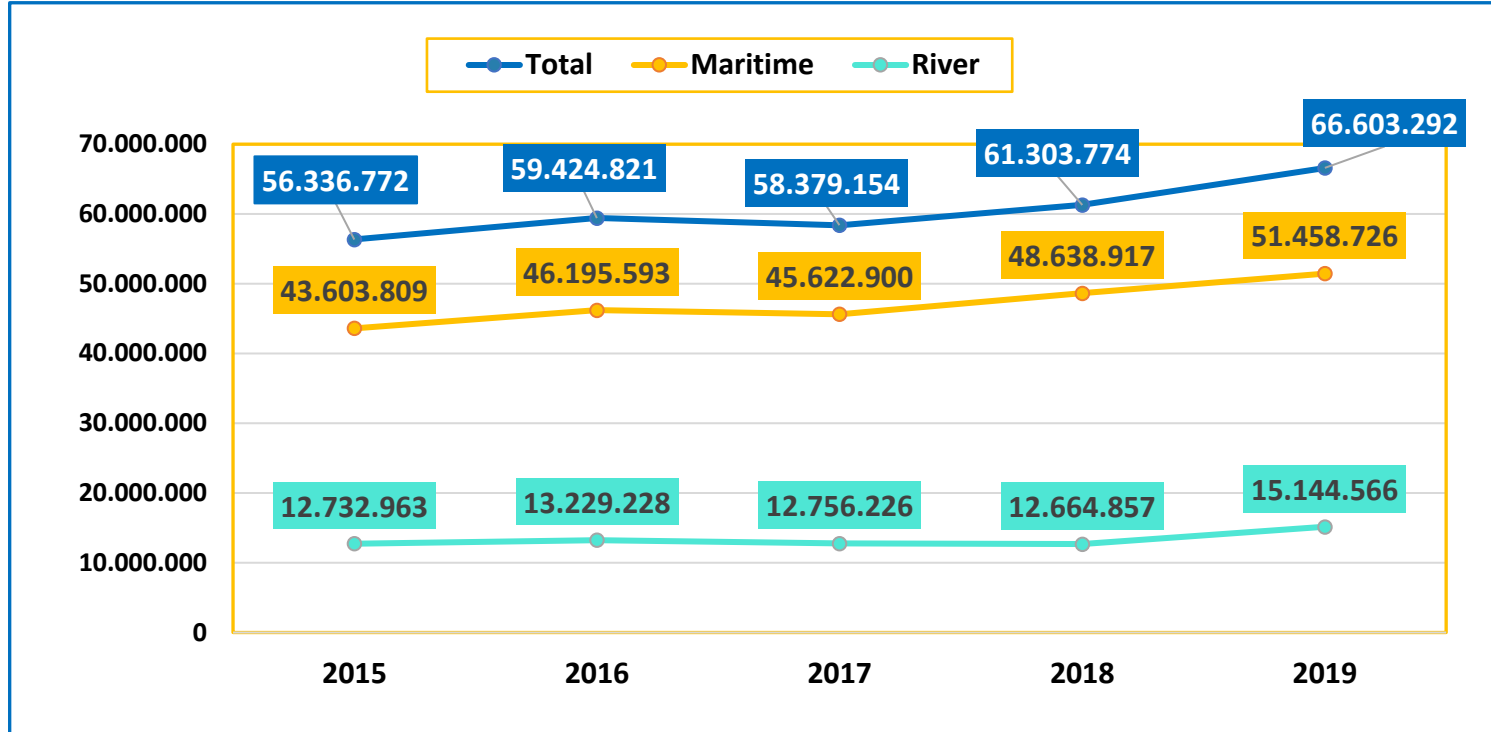


▀ About the Port

- Total surface of 3.926 ha, out of which 2.613 ha is water and 1.313 ha is land
- Good connections through railway, road, river and pipelines networks
- 43 port operators provide services for all types of cargo
- Largest container terminal at the Black Sea
- Land availability for future expansion - 283 ha



CONSTANTA PORT STATISTICS 2015 -2020



- 2019 exceeded the second best volume registered in 1988 – 62.3 mil. tons
- 2019 maritime traffic: import 42%, exports 46% and transit 12%
- 2019 river traffic: 22% of total traffic; transit 54% and cabotage 42%



■ Priorities for development



GREEN DEAL

NEW MASTER PLAN OF CONSTANTA PORT: ENERGETIC STRATEGY -> reduced CO₂ emissions

- **MAIN PILLARS:**
 - Renewable energy sources: solar, wind, biomass
 - **Use of cleaner fuels: new investments in LNG/H₂ terminals**
 - Attract investments in eco-friendly technologies
 - Encouraging the boost circular economy (eg. waste generated in the port is potential source of energy)
 - Smart grids tools implementation (**smart grid** - IT-based electric power systems - can help utilities conserve energy, reduce costs, increase reliability and transparency, energy efficiency and reduced pollution) ~ developed in connection with **Digitalization Strategy**

Constanta Port Administration was invited by the European Commission to be part of European Clean Hydrogen Alliance, launched on 8th of July 2020

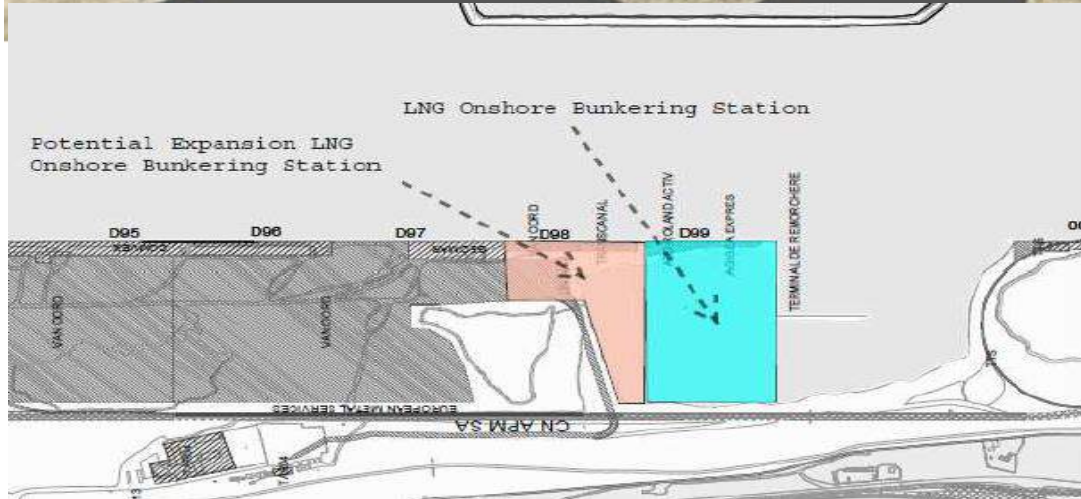
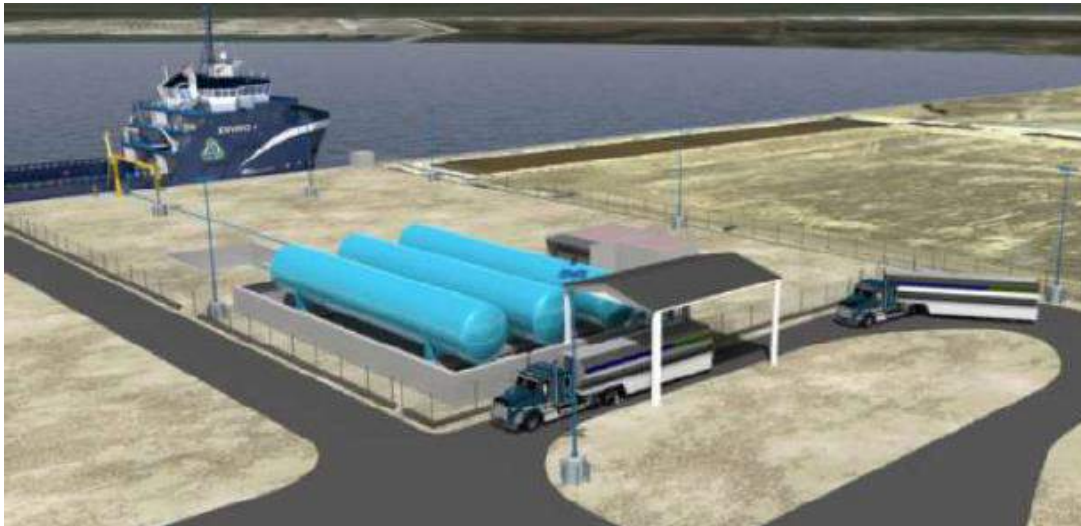
LNG distribution via Danube corridor



LNG facilities in Constanta Port – Where ?



LNG Bunkering Terminal



Estimated value: 17.700.000 €

Objectives:

- Completion of Berth 99
- LNG berth equipment installation
- Extension of road infrastructure for access
- Storage facilities and handling equipment – 5.000 m3 storage that can be extended to 10.000 m3
- The Bunkering Terminal will allow supply for both ships and trucks

Infrastructure – financed by MPA, from European funds or own resources

Superstructure – investment opportunity for private companies

Study developed within LNG Master Plan Corridor Rhine-Main-Danube Project (2015)

LNG Import Terminal



Estimated value: 150 mil. €

- Development depending on market request and potential
- New source for gas in Central and Eastern Europe → Achievement of energy hub position
- This will be possible after completion of Pier III-IVS infrastructure (long term project)

Typical Full Containment LNG Tank



- The LNG Regasification Terminal can be installed on a total plot area measuring approx. 350 x 450 m (excluding jetty structure) or ca. 15.7 ha
- Storage capacity of 130.000 m³
- Depths up to 19 m – will be able to accommodate the largest LNG carriers that can enter in the Black Sea



Your PORT ! Your PARTNER !

Maritime Ports Administration Constanța



Incinta Port Constanta
Gara Maritima
900900 Constanța
ROMANIA



+40 241 611 540
+40 241 619 512



apmc@constantza-port.ro



www.portofconstantza.com
www.facebook.com/constantaport
www.twitter.com/constantaport

