

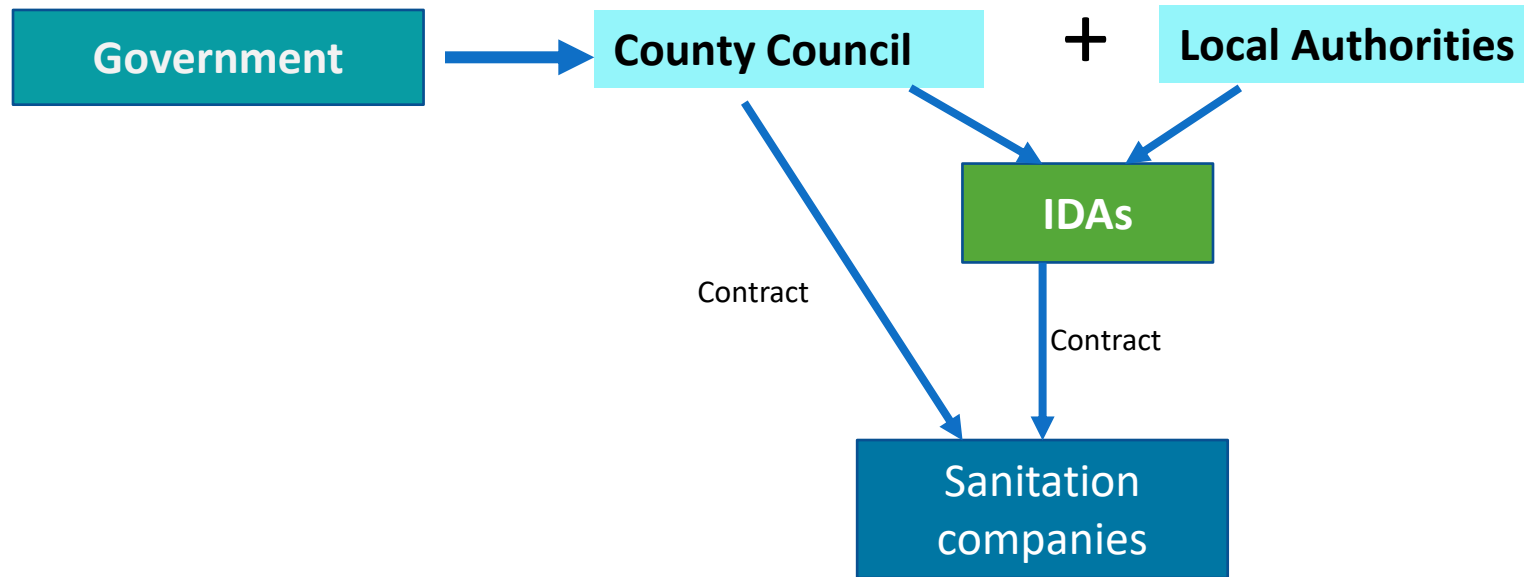
Waste management in Romania

W2GAS - Waste-To-Compost and Green Energy

Online event

26th November 2020

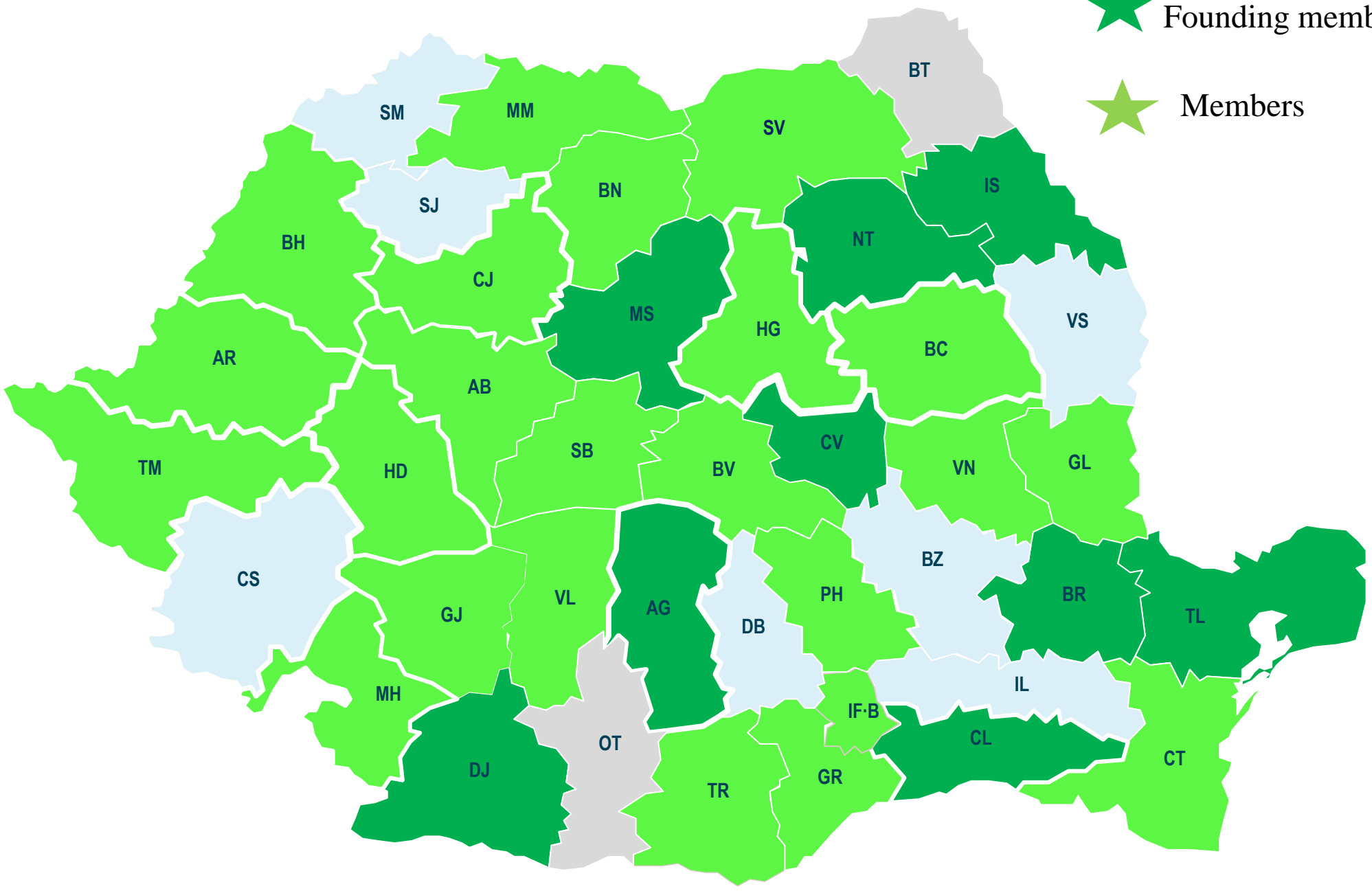
Responsibilities and relation on waste management



- Local authorities are responsible for municipal waste management
- Dedicated infrastructure are created using European structural funds in 32 counties
- Each county had to set up an association of administrative territorial units (cities and communes) in order to manage together the new infrastructure

 Founding members

 Members



FADI Objectives

Cooperation and institutional development in the field of waste in Romania

To increased representation and representativeness IDAs (Intercommunity Development Associations) whose main activity waste management at national and international level

Improving institutional and regulatory framework of operation of the IDAs

Exchange experience, good practices and information

To learn from the leaders on municipal waste management across Europe, to improve our members performance



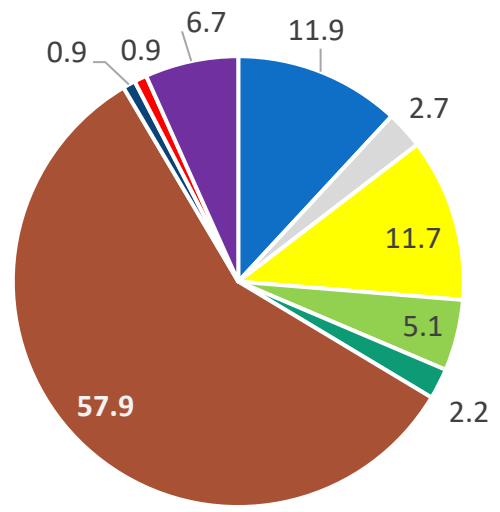
Situation on waste management in Romania - General information

- 20 mil. Inhabitants
 - 50% living in rural areas
- About 5 mil tons of waste generated /year
- Separate collection partly developed (less in rural areas)

More than 80% of municipal waste is still landfilled

More than 50% of municipal waste is biowaste

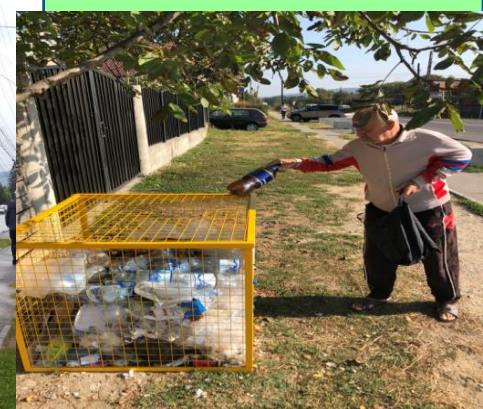
municipal waste composition (%)



- paper
- metal
- plastic
- glass
- wood
- biowaste
- textile
- bulky
- other

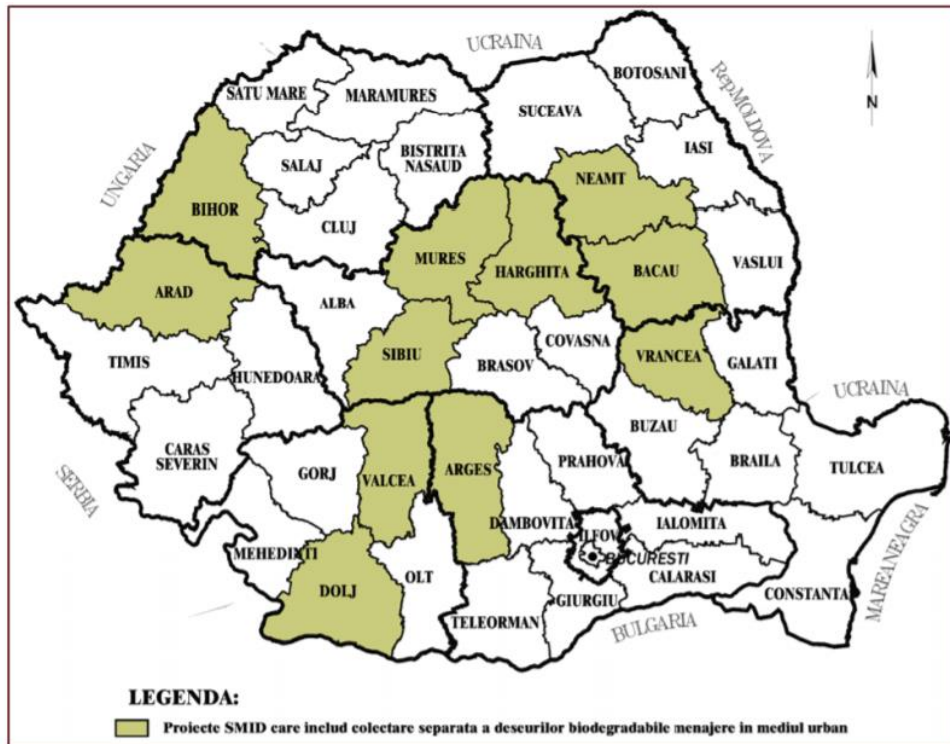
The practice in itself

- Public collection points for recyclable waste are available in most localities in Romania
- Starting second part of 2018 door to door system is applicable in some rural and urban areas (individual houses)
- Starting January 2019 PAYT system is implemented
- Communication campaigns (0.8 euro/ton in 2019 and 2020) for packaging waste with EPR systems (4000 tons packaging waste in one county => 32,000 euros)
- General communication campaigns related to separate collection done by ADIs and waste management companies



Biowaste management

Integrated waste management systems have been developed using EU funds
Separate collection of biowaste in urban areas - only in 11 counties



For rural areas home composting is preferable solution => individual composting unit (991.000) volume is 261.000 m³

For urban areas separate collection and composting in large facilities

Law 181/2020 regarding compostable waste

- Starting 1 January 2021 separate collection is mandatory
- Local authorities are responsible to organize the system of separate collection at sources
- Conformity certification of waste send to composting or anaerobic digestion

Technical norms will be adopted latest in January 2021 which will set also legal limits for all contaminants among other necessary provisions to support implementation

Biowaste management

Treatment capacity of biowaste is 380.000 tons/year that cover only 10% of total quantity of biowaste generated in 2014 (8% composting rate)

1,4 mil tons/year of bio-waste should be send to treatment facilities in the coming years as there are under construction new plants (composting , AD and MBT) in order to increase available capacity

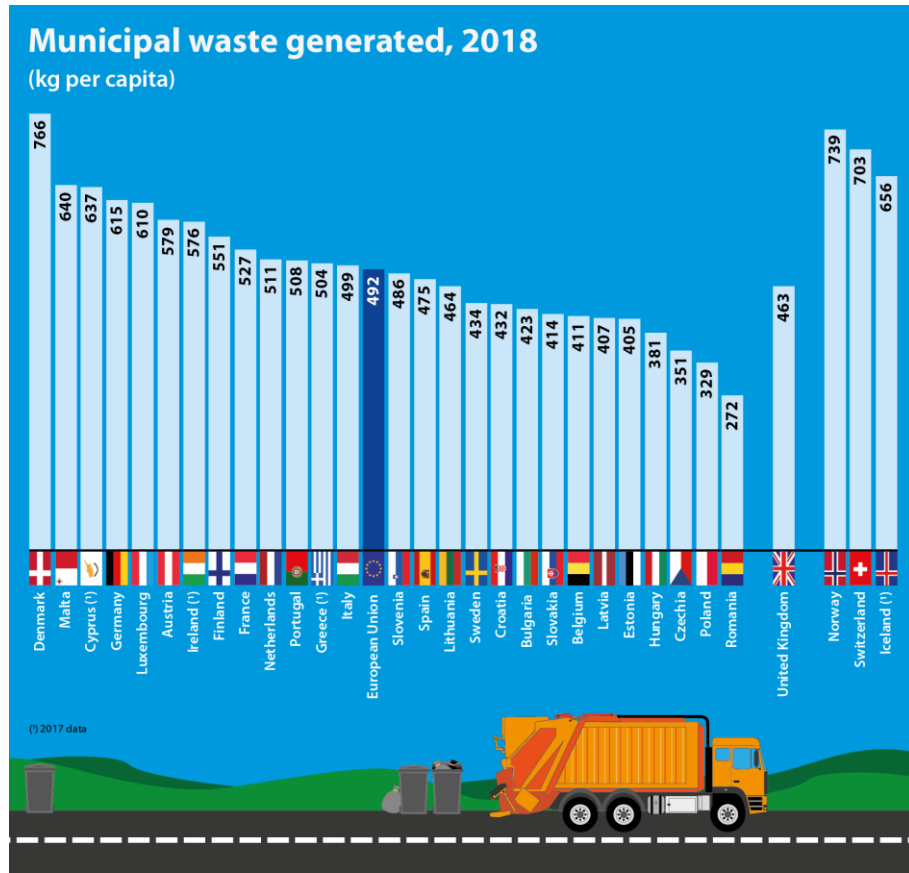


Compliance to EU regulations and waste targets

- EU legislation has been transposed into Romania legislation with some delay on CEP Directives
- For some targets Romania can have 5 years delay (ex: municipal waste recycling target)
- There is room for improvement on separate collection from population (not enough infrastructure available) and also most of actual installations need to be updated
- The focus will be separate collection of biowaste



Municipal waste generation and management



Most quantities of municipal waste are collected mixt

Some counties have in place mechanical separation of mixt residual waste to remove recoverable fraction

Packaging waste is often separate at source, but also other recyclable fraction as paper

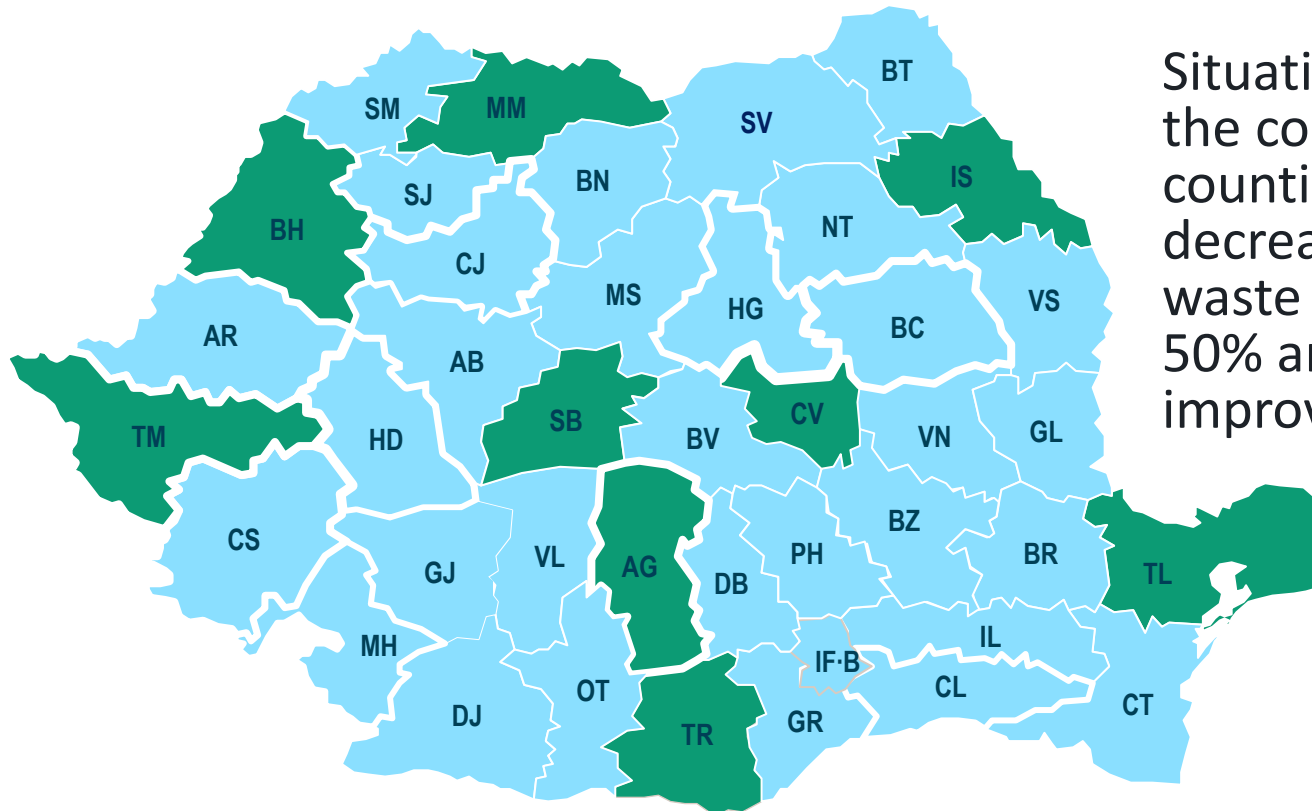
Recycling rate for municipal waste in about 14%

There are counties that sent important quantities of sorted municipal waste to co-incineration plants

Economic instruments

- Landfill tax paid by local authorities – about 10 euros/ton
=> min. 60% waste diverted from landfill in 2020
- Circular economy contribution => 16 euros /ton for waste sent to landfill starting 2020 paid by landfill owners or administrators
- PAYT applicable mandatory starting January 1st 2019 (not later than end of June)
- EPR scheme (full net cost)

Best practice examples



Situation is different across the county and some counties succeeded to decrease the quantities of waste send to landfill up to 50% and we can see improvement every day

THANK YOU!

Liliana Nichita

Director

Federation of Intercommunity Development Associations

e-mail: nichita.liliana@federatiaadi.ro